



You don't live in a clinic, so why only test your hearing there? Unitron's latest hearing diagnostic tool, FLEX™, tracks and analyses your listening data across **seven different environments**. A Real-World Assessment allows your hearing care journey to be personalised from the beginning. You can be sure that you will be fitted with the right technology suited to your lifestyle. FLEX™ is a discreet and stylish design, which allows you to experience impeccable sound instantly.

# Introducing a real-world assessment

This is your opportunity to try Unitron hearing aids in the real world with FLEX™, so we can personalise every step of your journey. We'll work together to make sure wearing and buying hearing aids is empowering, easy and flexible. It's an experience you can't get anywhere else.

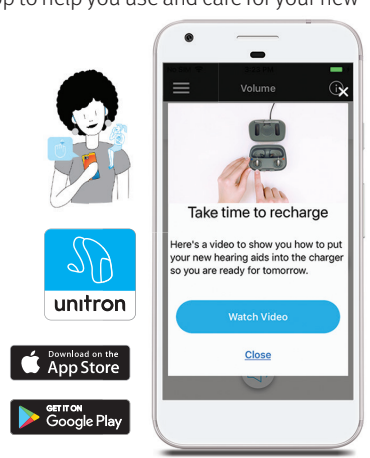
# Your hearing. Your way.

Welcome advice when you need it. Get personalised, timely, helpful tips and advice sent through our new coach feature on the Remote Plus app during your real-world assessment and beyond. It helps set you up for success with your new hearing aids. You listen, we learn. Our hearing aids gather insights\* to help us understand the way you listen and find the perfect solution for you. **Totally future-proof hearing aids**. If your hearing needs change in the future, you can upgrade your Moxi hearing aids without having to buy a brand new pair with FLEX:UPGRADE™.

\*Data is only available to clinic employees.

## FLEX is a two-way street

Timely tips and advice sent right to your smartphone will enable you to successfully incorporate hearing aids into your life, and ensure your hearing experience is stress-free the whole way through. Our coach feature sends these notifications through the Remote Plus app to help you use and care for your new hearing aids.



Did you know you can also use the Remote Plus app to control the volume in your listening environments to improve the comfort of your listening? and leave feedback about your real-world assessment for your audiologist.

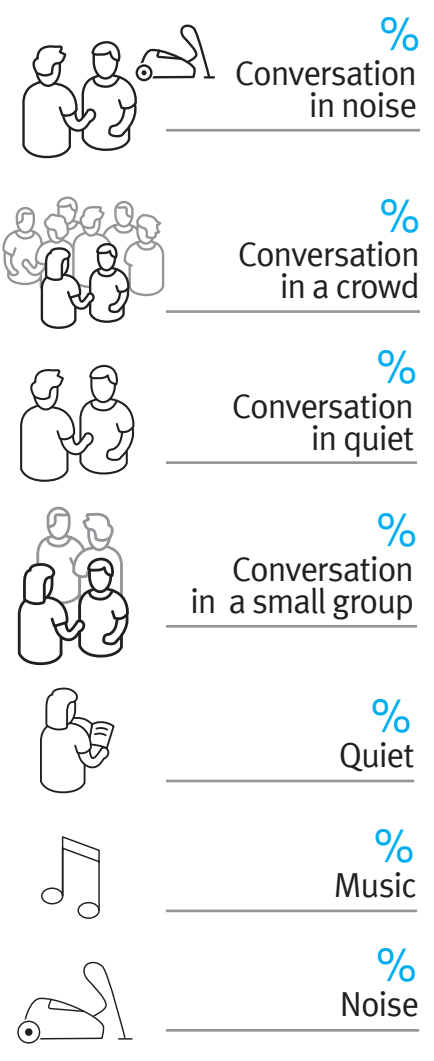
### Make the most of your real-world assessment

Wear FLEX™ diagnostic tool from the moment you wake up until the moment you go to sleep. 8 hours of data a day provides a true reflection of where you spend your time, and allows you and your audiologist to gather enough data to be sure a technology is personalised for you and your listening requirements.

We encourage you to record your experience of listening environments, particularly the environment you find most challenging, via the Remote Plus app as often as you can. The feedback you give provides you and your audiologist with a deeper understanding of your listening needs at your next appointment.

\*For the use of the Remote Plus app, Unitron hearing aids with Bluetooth® connectivity are required. The Remote Plus app works on Apple smartphones with iOS 10.2 or newer and Android smartphones with version 6 or newer. Apple and the Apple logo are trademarks of Apple Inc., registered in the U.S. and other countries. App Store is a service mark of Apple Inc. Google Play and the Google Play logo are trademarks of Google Inc.

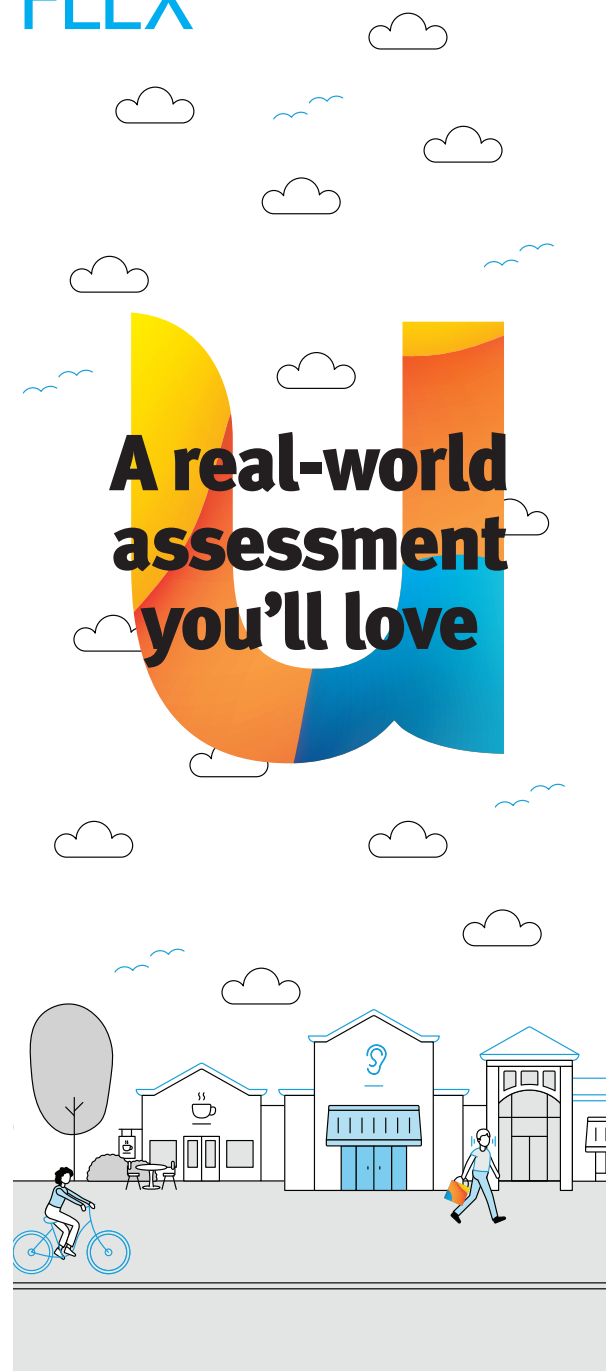
## Where do you spend your time?



Unitron is a hearing solution company that believes people should feel really good about the entire hearing care experience, start to finish. Our ingenious products, technologies, services and programs offer a level of personalisation you can't get anywhere else. Get ready to Love the experience.

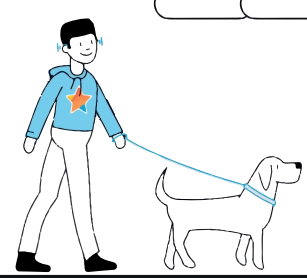
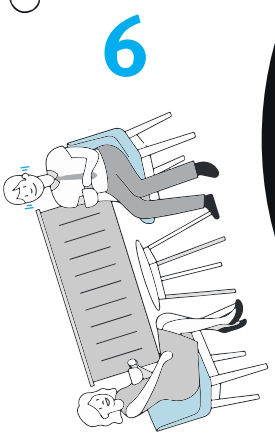
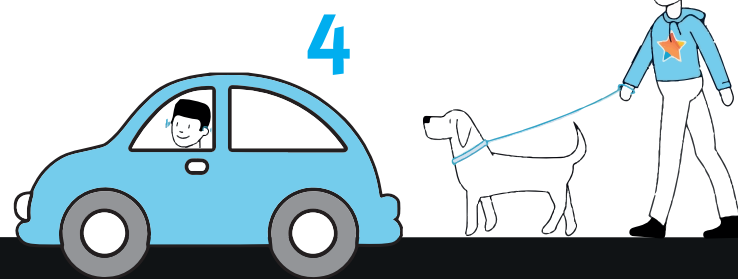
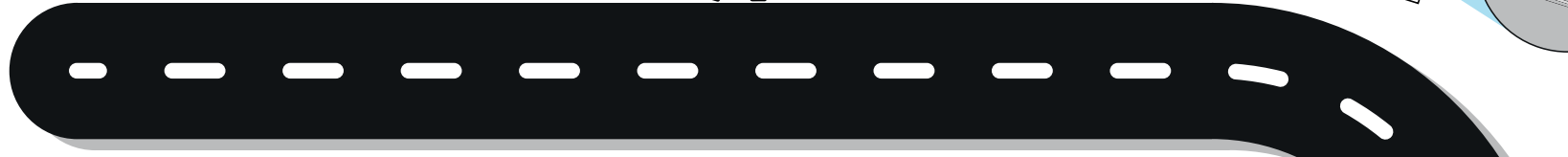


## FLEX





# The FLEX hearing care journey



1. Fitted with FLEX

4. Listening environment  
Noise

7. Listening environment  
Music

2. Listening environment  
Quiet

5. Listening environment  
Conversation in a small group

8. Listening environment  
conversation in noise

3. Listening environment  
Conversation in quiet

6. Listening environment  
Conversation in a crowd

9. Return to  
Independent Audiologist